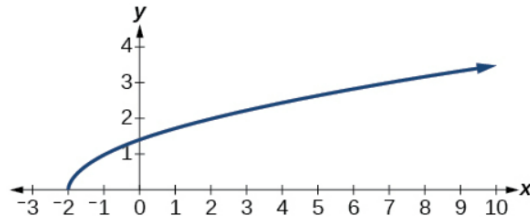


Exercise 52

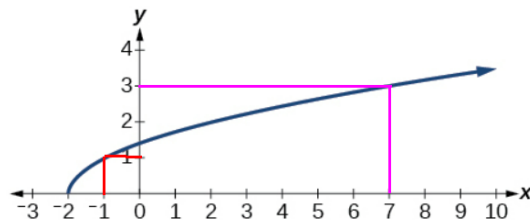
Given the following graph,

- (a) Evaluate $f(-1)$.
- (b) Solve for $f(x) = 3$.



Solution

The values are found from the graph. $f(-1)$ is the y -value associated with $x = -1$, and $f(x) = 3$ is asking for the x -value associated with $y = 3$.



(a) : $f(-1) = 1$

(b) : $x = 7$